

# Resthaven



Services in the Fleurieu

*Fleurieu*



**Resthaven**  
Incorporated

# Retirement living

Retirement Living

54 North Terrace, Port Elliot



## Premium retirement living at Port Elliot

**Live life to the full with independence and peace of mind!**

Enjoy an independent lifestyle in a stylish retirement unit, with freedom to come and go as you please without the burden of home maintenance and gardening.

Situated at 54 North Terrace, Port Elliot, Resthaven's architecturally designed, two bedroom retirement units have separate, private access, and luxury interior decor, appliances and finishes.

Each unit features age-friendly design, a fully equipped modern kitchen, spacious bedrooms and living areas, ensuite bathrooms, and a powder room. All units have individual climate control, energy efficient lighting, and laundry facilities. They are all internet enabled.

A lifetime licence to occupy the unit is \$406,000 (as at July 2018).

Optional services, such as meals, housekeeping, linen supply and laundry may be negotiated, as can assistance with accessing appropriate extra home care services if required.

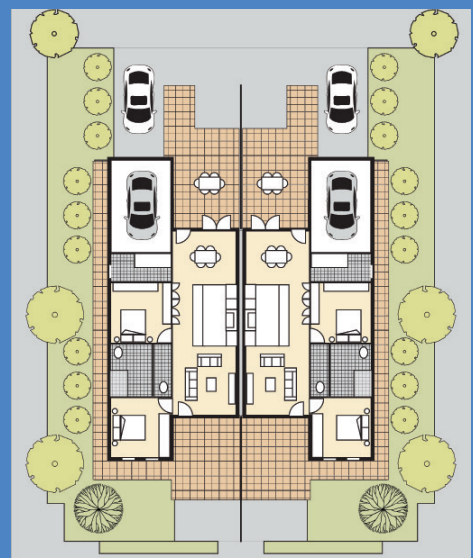
Enquiries are welcome. Phone **8370 3756**  
or email [retirement@resthaven.asn.au](mailto:retirement@resthaven.asn.au).

## Enjoy the benefits

Port Elliot offers excellent shopping, cafes, a bakery and parks, all within strolling distance. Venture further and you will find the spectacular Horseshoe Bay and Soldiers Memorial Gardens.

A not-for-profit aged care community service associated with the Uniting Church, Resthaven has been providing outstanding care and support to older people and their carers since 1935.

Whether you live in your own home or at Resthaven, our capable staff provide you with excellent care. Our services are all fully accredited.



# Residential care

Residential Care

3 Frederik Street, Port Elliot



## Resthaven Port Elliot

Resthaven Port Elliot, at 3 Frederik Street, Port Elliot, is an architecturally designed residential aged care facility that offers a desirable living environment.

Each room features quality fittings, an ensuite bathroom, call bell system and individual climate control. Rooms are Pay TV ready if you choose to use this option.

Private areas and lounges are available for a family gathering or to sit and read a book from our library. Catch up over coffee in the alfresco area, or online in the internet cafe.

The delightful gardens offer spacious areas for group interaction, as well as secluded spots for quieter moments. The courtyard gardens, barbecue and activity areas are available for all to enjoy.

Our hairdressing salon is designed for your comfort and convenience. There is a well stocked shop on site to purchase those little extras.

Whilst linen is laundered offsite, we can take care of your personal laundry. A laundry is available for those who wish to use it.

## Residential Services

Resthaven provides high standards of service, and promotes quality of life, for older people for whom living without assistance is difficult, or who may benefit from the supportive services, companionship and activities provided. We take each person's individual circumstances into consideration and encourage independence in maintaining daily living skills.

Residential services may include showering, dressing, bed making and medication management, with room cleaning and all meals and laundry provided. Our stylish dining rooms make meal time a pleasure, with freshly cooked, home-style meals served daily.

In our warm, safe and homelike environment, new residents are welcomed and supported as they settle in. Our diverse lifestyle program offers a wide range of activities: current affairs, creative arts, movies and interactive visits from school groups and entertainers.

Health professionals, such as podiatrists, physiotherapists and speech pathologists, visit the site regularly or on request.

Residential respite accommodation is also available.

Eligibility for residential aged care or respite requires an independent assessment by the Government Aged Care Assessment Team (ACAT), to ensure that the applicant is eligible for this level of care. Call the local ACAT at the Southern Fleurieu Health Service on 8552 0600.

**Accommodation enquiries phone 8373 9120**  
or email [accommodation@resthaven.asn.au](mailto:accommodation@resthaven.asn.au)



# Community services

Community Services

50 North Terrace, Port Elliot



## Community Services

Resthaven's Community Services can provide support for you in your own home in the community, an independent retirement living unit or apartment, or in a retirement village.

The services provided depend on your care needs and service priorities. Resthaven will discuss the options with you.

We look forward to meeting you in your home or at our Lifestyle Choices Wellness and Activity Centre at 50 North Terrace, Port Elliot.

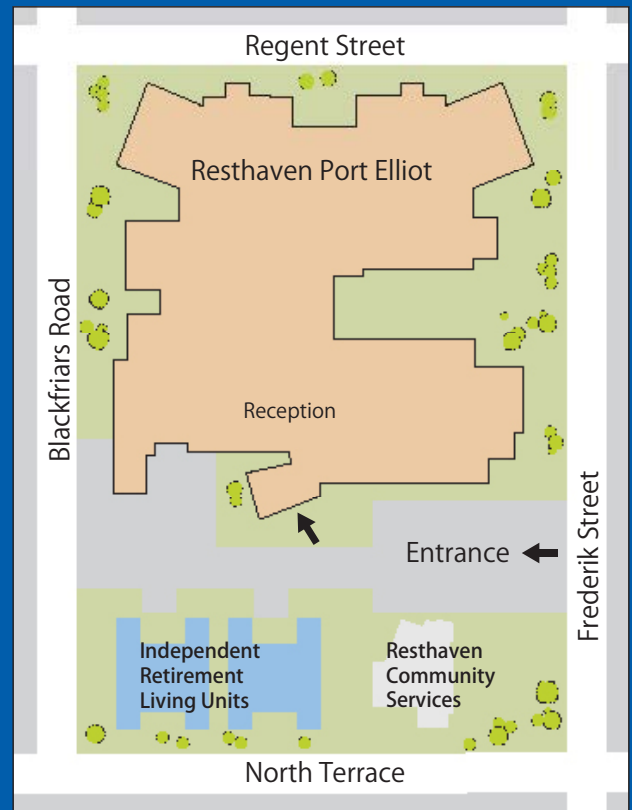
Resthaven also supports carers of older people to have a planned rest or break (respite) from their caring role, and to maintain their own physical and emotional health.

Community respite support is flexible and can be provided in the person's own home, in group settings, or in community settings.

For details, phone **8531 2989** or **1300 13 66 33** for the cost of a local call.

Email [mbhcs@resthaven.asn.au](mailto:mbhcs@resthaven.asn.au)

## Location



## Interested in volunteering?

Resthaven welcomes enquiries.

Go to the volunteering page on our website to send an expression of interest.

For more information about the range of services Resthaven offers visit:

[www.resthaven.asn.au](http://www.resthaven.asn.au)

