



Resthaven Murray Bridge is a recently renovated residential aged care home offering easy access to an array of shopping, entertainment, leisure and lifestyle experiences.

The convenient location is within a short distance to the local shops, public library, museum, parks and reserves.

At Murray Bridge, Resthaven offers a comprehensive range of aged care services, including residential aged care and respite accommodation for older people requiring this level of support. Resthaven's friendly workforce love working alongside older people and their carers. We look forward to welcoming you to Resthaven Murray Bridge.

In our warm, safe and homelike environment, new residents and their families are welcomed and supported as they settle in. At Resthaven, you can enjoy a wide range of activities from the comprehensive and personalised lifestyle program, including creative arts, community singalongs, concerts, bus trips, movies and interactive visits from school groups as part of our intergenerational program.

Care professionals including dentists, podiatrists,

physiotherapists and speech pathologists visit the site regularly or upon request.

Ecumenical worship services are held in our hall with its own chapel area. Chaplaincy support is available and Resthaven respects all religious faiths and beliefs.

More private internal and external areas are available for a family gathering or to sit and read a book from our library. Some may prefer to catch up with a coffee or browse the Internet in the Café area.

The delightful gardens offer spacious areas for group interactions and comfortable spots for tranquil moments or reminiscing. The professionally landscaped gardens and courtyards, barbecue and activity areas are all well maintained.

Our stylish dining rooms make meal time a pleasure, with freshly cooked, home-style meals served daily. There is a shop on site to purchase those little extras.

Our hairdressing salon is

designed for your comfort and convenience.

Whilst linen is laundered offsite, we can do your personal laundry. However, a laundry is available for those who wish to do their own.

All Resthaven residential aged care homes have generators installed to ensure ongoing service provision in the case of power failures.

Our ongoing workforce development program ensures all staff maintain a high level of capability as we endeavour to achieve our purpose of providing outstanding care and support to older people and their carers.

Staff are proud of their customer service focus and this is reflected in comments received: 'Staff are friendly, helpful, welcoming and dedicated at Resthaven Murray Bridge'.

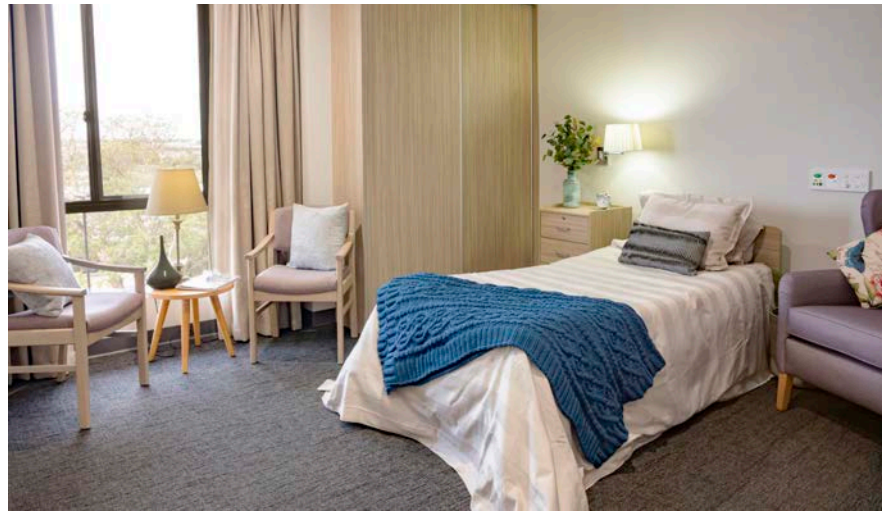
**53 Swanport Road
Murray Bridge SA 5253
Phone 08 8532 1969**

Residential Accommodation Prices

Enquiries: 08 8373 9113

Prices effective as of 1 January 2019. Date of issue: January 11, 2019 1:39 PM. Prices correct at time of publishing – subject to change. Photos indicative only.

Superior Single Room with a View – Private Ensuite

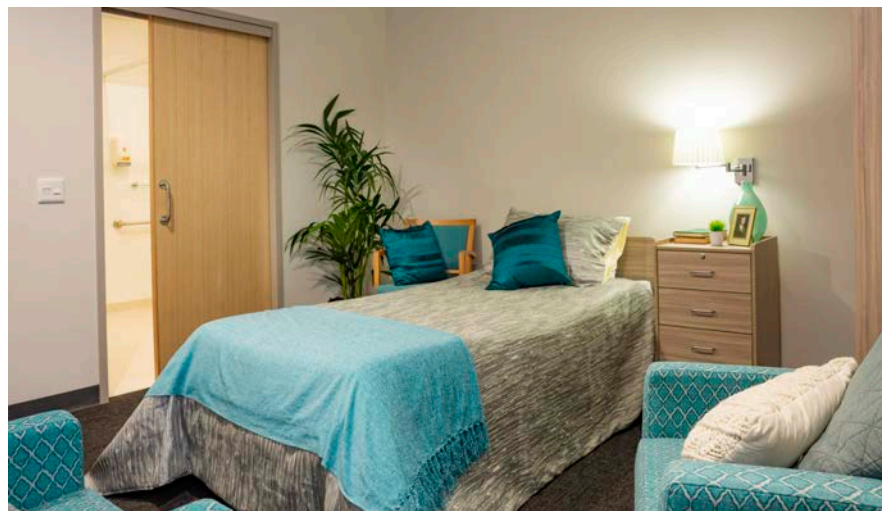


Size range: 18.2m²

(excludes ensuite/bathroom facilities)

Payment Options	Amount
DAP only	\$63.47
RAD only	\$390,000
Combination	
RAD 50%	\$195,000
DAP 50%	\$31.73

Premium Large Single Room – Private Ensuite

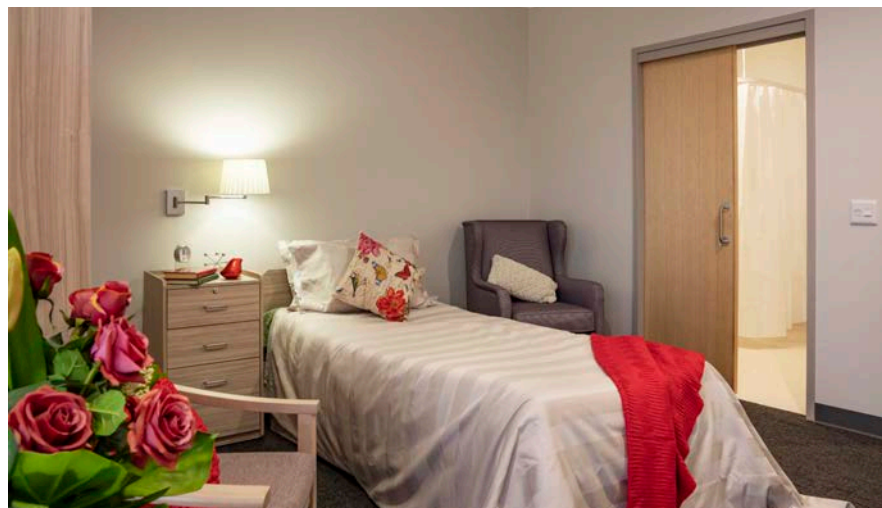


Size range: 26.3m² – 26.5m²

Average size: 26.5m² (excludes ensuite/bathroom facilities)

Payment Options	Amount
DAP only	\$63.47
RAD only	\$390,000
Combination	
RAD 50%	\$195,000
DAP 50%	\$31.73

Superior Single Room – Private Ensuite



Size range: 18.2m²

(excludes ensuite/bathroom facilities)

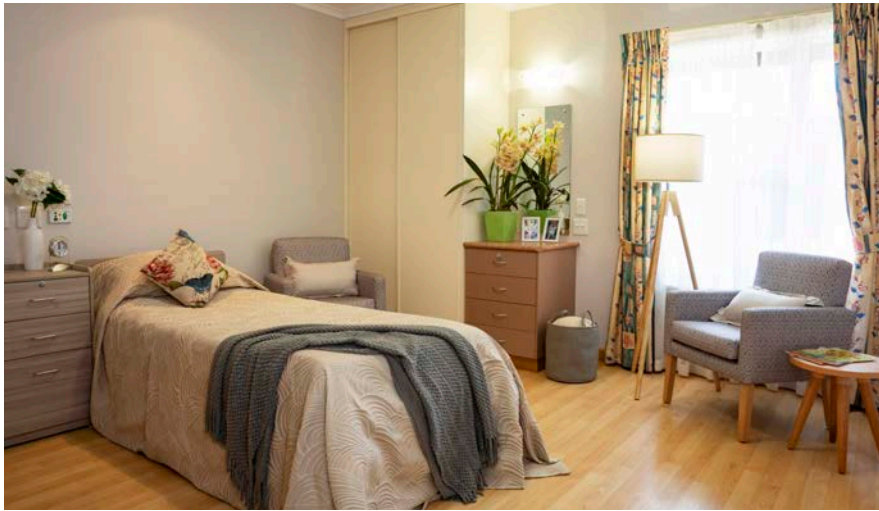
Payment Options	Amount
DAP only	\$61.03
RAD only	\$375,000
Combination	
RAD 50%	\$187,500
DAP 50%	\$30.51

Residential Accommodation Prices

Enquiries: 08 8373 9113

Prices effective as of 1 January 2019. Date of issue: January 11, 2019 1:39 PM. Prices correct at time of publishing – subject to change. Photos indicative only.

Premium Single Room – Private Ensuite



Some rooms have dementia-specific design features.

Size range: 14.6m² – 23.9m²

Average size: 18.3m² (excludes ensuite/bathroom facilities)

Payment Options	Amount
DAP only	\$56.96
RAD only	\$350,000
Combination	
RAD 50%	\$175,000
DAP 50%	\$28.48

Premium Shared Room – Shared Ensuite



For couples upon request.*

Size range: 26.3m² – 26.5m²

Average size: 26.5m² (excludes ensuite/bathroom facilities)

*Prices shown are per person

Payment Options	Amount
DAP only	\$35.80
RAD only	\$220,000
Combination	
RAD 50%	\$110,000
DAP 50%	\$17.90



Resthaven Murray Bridge

Residential Accommodation Pricing Information

Resthaven believes that affordable aged care should be accessible to all. You can choose from a selection of payment options in the form of a Refundable Accommodation Deposit (RAD), Daily Accommodation Payment (DAP) or a combination of both.

In some circumstances you may apply to Resthaven for consideration of your individual financial means. Amounts payable for those eligible for government financial support are determined by government means testing.

Details on payment options are contained in the Residential Fees and Charges schedule.

Features

Resthaven residential accommodation features single rooms or shared accommodation for couples, all with ensuites; individual heating and cooling; easy to identify signage; communal access to an attractive garden and courtyard areas; as well as bright, spacious, family friendly indoor and outdoor living areas. Most rooms have an outlook to a garden, courtyard, the picturesque Sturt Gorge, or even glimpses of the city or sea. We offer secure areas dedicated to the provision of ongoing specialised care for those living with dementia.

Pricing Notes

Accommodation payment arrangements can be tailored to meet individual needs.

Please contact our friendly staff on **08 8373 9113** for an obligation free chat and to discuss the various options.

The Daily Accommodation Payment (DAP) is calculated using current Maximum Permissible Interest Rate (MPIR): 5.94%. MPIR is prescribed by the Minister each quarter.

Care needs may influence the range of rooms available to choose from.

Additional private services can be negotiated for purchase.

Support

Residents and care staff have access to qualified nursing staff, 24 hours/day, seven days a week, with high level support from our qualified clinical team.

Resthaven's ongoing workforce development program ensures that our well trained and screened staff maintain a high level of capability as we endeavour to achieve

our purpose of providing outstanding care and support to older people and their carers.

Site features:

Activity hall, barbeque area, dining areas, gardens, hairdressing salon, internet café, laundry, library, lounges, shop.

Room features:

Built-in wardrobe, call bell, curtains, individual heating/cooling, telephone connection, television antenna connection.

Site and Local Features

Local government area:

Rural City of Murray Bridge

Local services and amenity:

Public library, museum, local shops, parks, reserves, Murray River.

Total accessible common areas:

2,222m² (indoor:

1,049m², outdoor: 1,173m²)

Average building space:

64m² per resident (includes common areas)



Contact Us

Please contact our friendly staff on **08 8373 9113** for an obligation free chat or visit: www.resthaven.asn.au

For respite accommodation, call **08 8373 9175**

Site Tours

Tours are conducted regularly. Phone **08 8373 9113** to book your place. For government information visit the website

www.myagedcare.gov.au, or call My Aged Care on **1800 200 422**.

