



Within a short distance to the ocean, shops, cafes, the public library, churches, gardens, parks and reserves, Resthaven's Port Elliot location offers easy access to an array of shopping, entertainment, leisure and lifestyle experiences.

**In the charming seaside town of Port Elliot, Resthaven's new, state of the art aged care facility offers a range of support services for older people. Resthaven Port Elliot offers residential aged care and respite accommodation for older people requiring this level of support.**

With many towns and the Victor Harbor shopping precinct nearby, Resthaven Port Elliot is ideally situated within a short stroll of the town's main shopping strip, churches, eateries and the famous bakery. The spectacular Horseshoe Bay offers splendid views from parklands near the sea front or the picturesque Soldiers Memorial Gardens overlooking the bay.

There are ample opportunities to shop and no shortage of facilities.

At Resthaven, residents enjoy a wide range of activities: current affairs programs, creative arts, enjoyable singalongs, movies and interactive visits from

school groups as part of our intergenerational program.

Health professionals, including podiatrists, physiotherapists and speech pathologists, visit the site regularly or upon request.

Fortnightly ecumenical worship services are held in the multi-functional hall with its own chapel area. Resthaven Port Elliot respects all religious faiths and beliefs.

More intimate areas are available for a family gathering or to sit and read a book from our library. Some may prefer to catch up with a coffee in the alfresco area.

Our stylish dining rooms make meal time a pleasure, with freshly cooked, home-style meals served daily. There is a shop on site to purchase those little extras. More shopping opportunities are presented by visiting mobile shops. Our hairdressing salon is designed for your comfort and convenience. Whilst linen is laundered offsite, we take care of your personal laundry. A laundry is available for those who wish to use it.

The delightful gardens offer spacious areas for group interactions and secluded spots for tranquil moments or reminiscing. The gardens, landscaped courtyards, barbecue and activity areas are all well maintained.

In our warm, safe and homelike environment, new residents are welcomed and supported as they settle in. Friendships are fostered. Our diverse lifestyle program ensures there is always something to do or someone to talk to, if this is your wish.

Our ongoing workforce development program ensures all staff maintain a high level of capability as we endeavour to achieve our purpose of providing outstanding care and support to older people and their carers.

We are proud of our customer service focus and look forward to welcoming you!

**3 Frederik Street  
Port Elliot SA 5212  
Phone 08 8574 5100**

# Residential Accommodation Prices

Enquiries: 08 8373 9113

Prices effective as of 1 April 2020. Date of issue: 27 May 2020. Prices correct at time of publishing – subject to change.

Note: room photos are indicative only.

## Premium Single Room – Private Ensuite

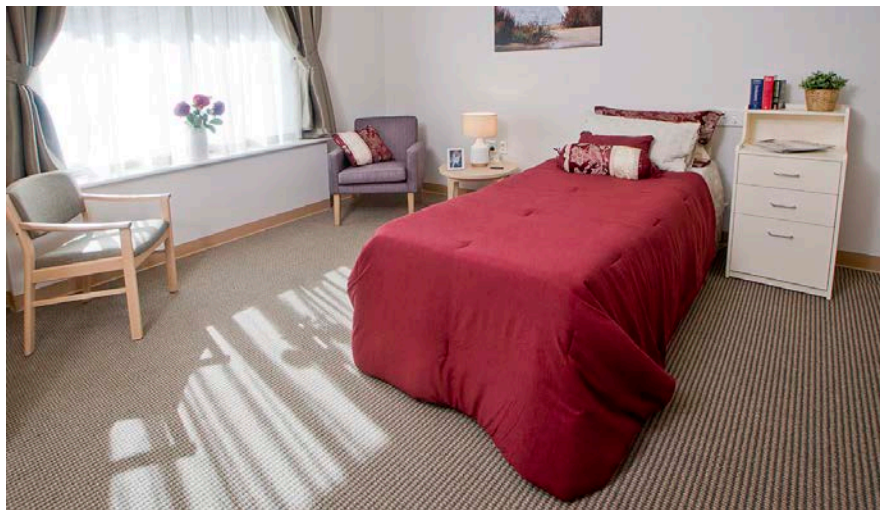


**Size range: all rooms 26.5m<sup>2</sup>**

Average size: 26.5m<sup>2</sup> (excludes ensuite/bathroom facilities)

Payment Options	Amount
DAP only	\$52.24
RAD only	\$390,000
Combination	
RAD 50%	\$195,000
DAP 50%	\$26.12

## Single Room – Private Ensuite



**Size range: all rooms 18.3m<sup>2</sup>**

Average 18.3m<sup>2</sup> (excludes ensuite/bathroom facilities)

Payment Options	Amount
DAP only	\$46.89
RAD only	\$350,000
Combination	
RAD 50%	\$175,000
DAP 50%	\$23.45



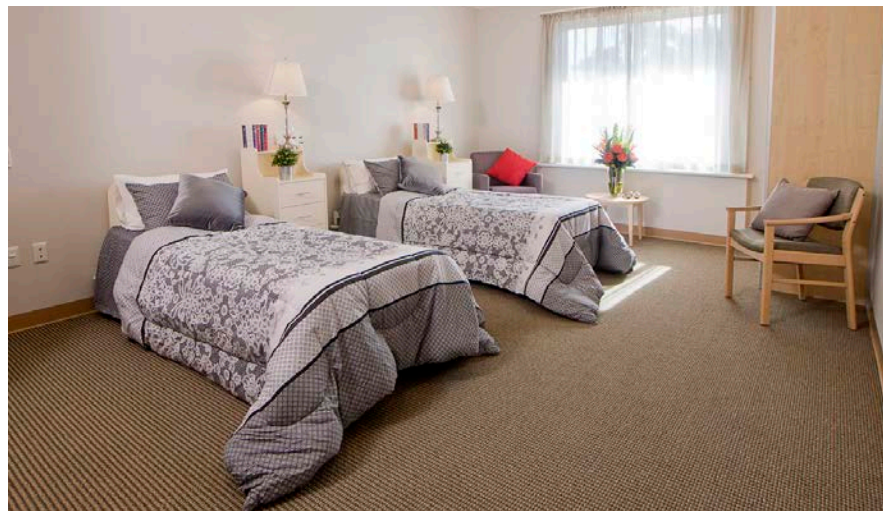
# Residential Accommodation Prices

Enquiries: 08 8373 9113

Prices effective as of 1 April 2020. Date of issue: 27 May 2020. Prices correct at time of publishing – subject to change.

Note: room photos are indicative only.

## Premium Couples Room – Shared Ensuite



**For couples upon request\***

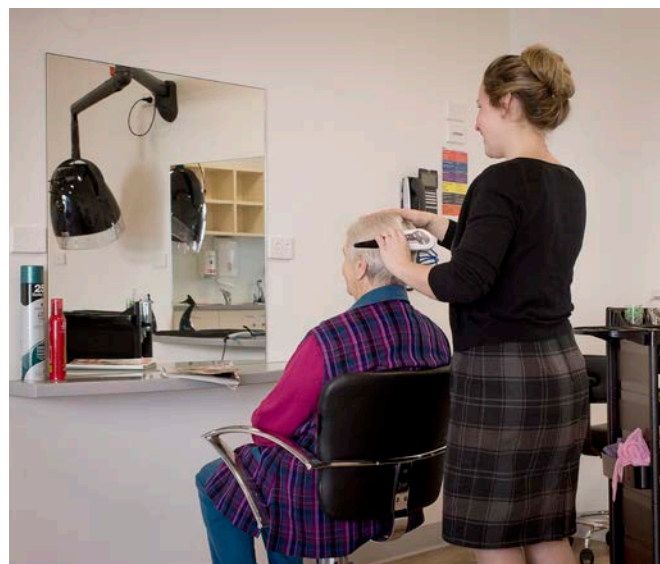
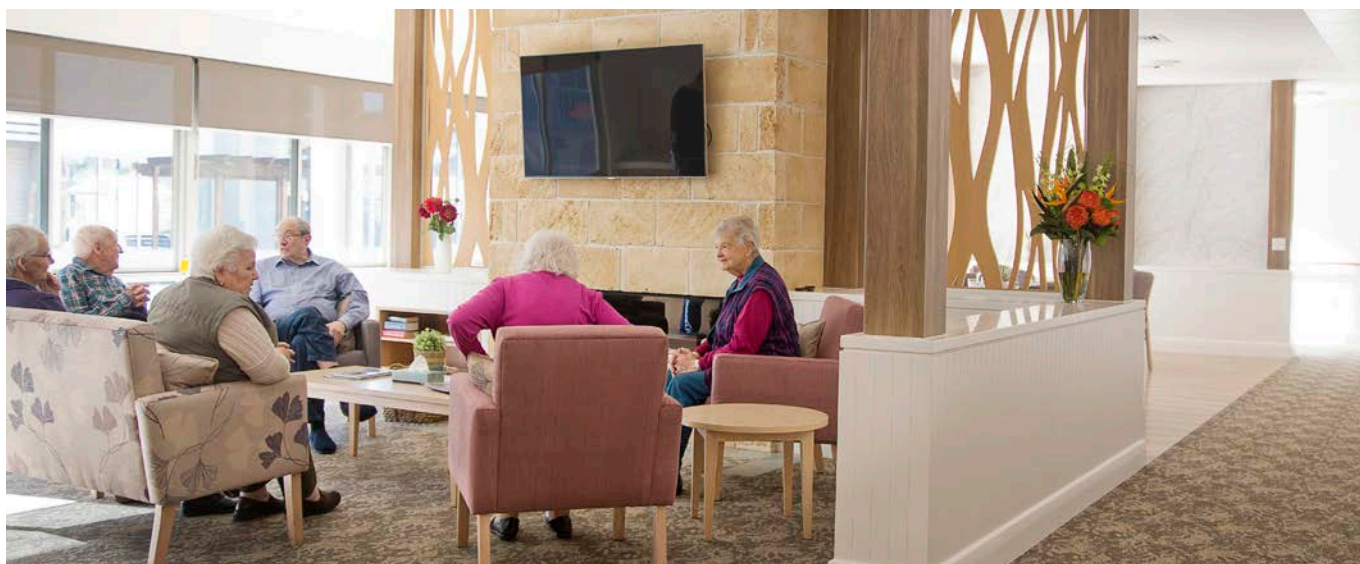
Subject to availability.

**Size range: all rooms 26.5m<sup>2</sup>**

Average size: 26.5m<sup>2</sup> (excludes ensuite/bathroom facilities)

Payment Options	Amount
DAP only	\$32.82
RAD only	\$245,000
Combination	
RAD 50%	\$122,500
DAP 50%	\$16.41

\*Prices shown are per person



# Resthaven Port Elliot

## Residential Accommodation Pricing Information

Resthaven believes that affordable aged care should be accessible to all.

You can choose from a selection of payment options in the form of a Refundable Accommodation Deposit (RAD), Daily Accommodation Payment (DAP) or a combination of both. In some circumstances you may apply to Resthaven for consideration of your individual financial means.

Amounts payable for those eligible for government financial support are determined by government means testing. Details on payment options are contained in the Residential Fees and Charges schedule.

## Features

Incorporating modern design with generous building space per resident, excellent security, monitored fire safety and sprinkler systems, Resthaven Port Elliot features predominantly single rooms, all with an ensuite bathroom, individual climate control, and an outlook to a garden or courtyard.

Some rooms have dementia-specific design features.

## Pricing Notes

Accommodation payment arrangements can be tailored to meet individual needs. Please contact our friendly staff on **08 8373 9113** for an obligation free chat and to discuss the various options.

DAP is calculated using current Maximum Permissible Interest Rate (MPIR): 4.89%. MPIR is prescribed by the Minister each quarter. Your care needs may influence the range of rooms available for you to choose from.

## Support

Residents and care staff have access to qualified nursing staff, 24 hours a day, seven days a week, with high level support from our qualified clinical team.

Resthaven's ongoing workforce development program ensures that our well trained and screened staff maintain a high level of capability as we endeavour to achieve our purpose of providing

outstanding care and support to older people and their carers.

### Site features:

Activity hall with chapel area, Alfresco area, Barbeque area, Dining areas, Gardens, Hairdressing salon, Internet cafe, Laundry, Library, Lounges, Shop.

### Room features:

Built-in wardrobe, Call bell, Soft furnishings, Individual heating/cooling, Telephone connection, Television antenna connection, Pay television option.

## Site and Local Features

### Local government area:

Alexandrina Council

### Local services and amenity:

Public library, churches, gardens, shops, bakery, beaches, parks and reserves.

### Total accessible common areas:

3,289.9m<sup>2</sup> (indoor: 1,204.2m<sup>2</sup>, outdoor: 2,085.7m<sup>2</sup>)

### Average building space:

74.9m<sup>2</sup> per resident (includes common areas)



## Contact Us

Please contact our friendly staff on **08 8373 9113** for an obligation free chat or visit: [www.resthaven.asn.au](http://www.resthaven.asn.au)

## Site Tours

Tours are conducted regularly. Phone **08 8554 2000** to book your place. For government information visit the website [www.myagedcare.gov.au](http://www.myagedcare.gov.au), or call My Aged Care on **1800 200 422**

