



Resthaven Elizabeth North Retirement Living
32 KNIGHTON ROAD ELIZABETH NORTH



Adjacent to Womma Park, this group of retirement living units make for a private and peaceful setting to call home.

Constructed around 1995, units feature one, two or three bedrooms, air conditioning, carports with lockable roller doors, and paved driveways, and are set behind a fence with security gate. The established, maintained, landscaped gardens enable you to enjoy a low maintenance, easy living lifestyle.

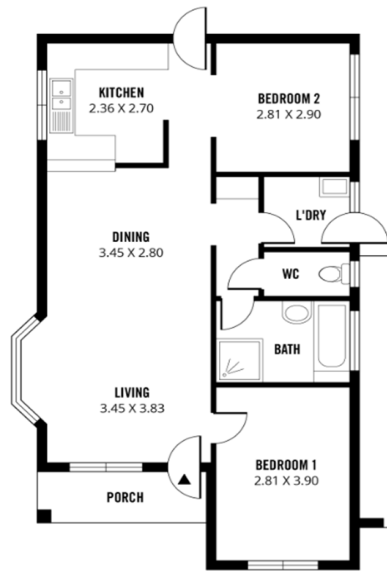
A one-minute drive will take you to the Elizabeth City Centre shopping precinct, with supermarkets, variety stores, cafes, and cinemas.

Units include:

- One, two or three bedrooms
- Air conditioning
- Carports with lockable roller doors
- Paved driveways
- Barbeque/ pergola area
- Established, landscaped gardens



A group of eleven federation-style units in a secure and private location close to the Elizabeth City Centre precinct, for an easy living retirement



Diagrams are for illustrative purposes only. Not to scale.



Resthaven Elizabeth North Retirement Living 32 Knighton Road, Elizabeth North

A licence arrangement grants the right to occupy the premises. Tenure, or right to occupy the unit, is protected by the South Australian Retirement Villages Act 2016. A fortnightly maintenance fee covers all rates, taxes, building insurance, maintenance and gardening.

Enquiries: Retirement Living Coordinator 8373 9131 or email retirement@resthaven.asn.au

In-home Support | Retirement Living | Respite Care | Residential Aged Care www.resthaven.asn.au